

BDD-10-15 Series



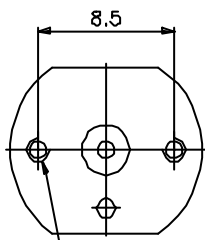
- DC Brush Motor
- Designed for high volume applications
- Up to 13 g-cm of Torque
- 10 mm diameter
- Custom versions are available

Specifications

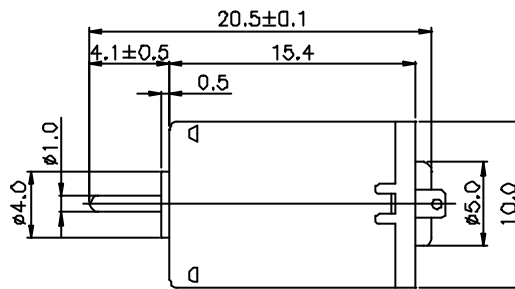
Model Number	Voltage		No Load		At Maximum Efficiency					Stall Torque (g-cm)
	Operating Range (Volts DC)	Nominal (Volts DC)	Speed (RPM)	Current (Amps)	Speed (RPM)	Current (Amps)	Torque (g-cm)	Output (Watts)	Eff. (%)	
BDD-10-15-4.8V-14200	2.0 – 5.0	4.8	14200	0.037	10900	0.13	2.4	0.268	43.0	11.0
BDD-10-15-2.4V-15800	1.2 – 3.0	2.4	15800	0.06	12200	0.33	2.8	0.350	44.2	13.0
BDD-10-15-5.0V-9820	3.0 – 6.0	5.0	9820	0.02	6680	0.07	2.0	0.137	39.2	6.25

DIRECTION OF ROTATION

UNIT: MILLIMETERS



M1 4X0.3 TAPPED HOLE
2 PLACES



WEIGHT 5g(APPROX)

